

TRAIL CREW NOTES

20 September 2023

Location: Lower Big Quilcene (833), ONF

Crew members:

David Graves

Joanne Graves

Hours on job: 2x7=14

Objective(s) for the day:

- Brush upper third of Lower Big Quilcene trail
- Tread and drainage maintenance as time permits

Task(s) accomplished:

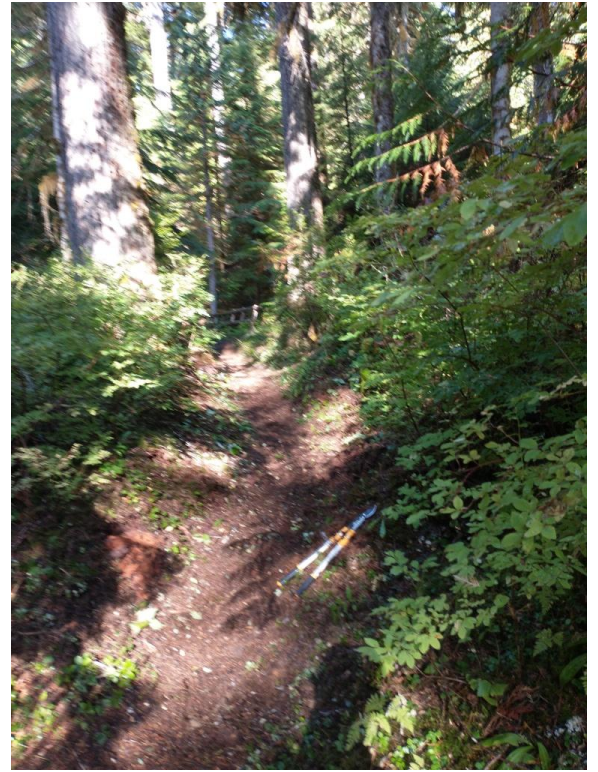
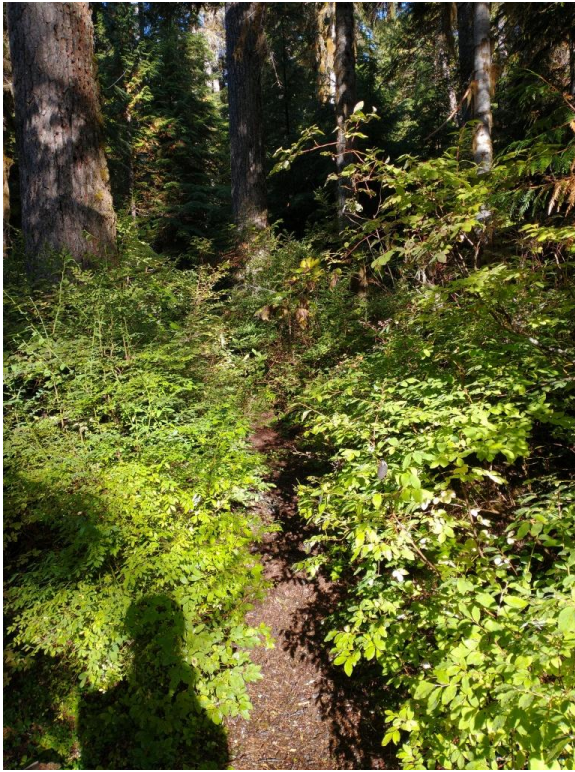
- Note: FR2750 in very good condition with only a few shallow potholes; much better than the mess we encountered in Spring.
- Brushed two miles of trail. Brush was generally not a problem with last year's brushing still evident. Pulled (countless) huckleberry bushes that were intruding into trail as well as numerous fir/cedar seedlings taking root within stock corridor. Used hedge trimmer on portions heavy with salal, salmonberry, and thimbleberry.
- Cleared entrance to Camp Jolly which was almost disguised by the brush.
- Cleared rotten wood from trail where snag had fallen across trail
- Rebenched two portions of trail where cyclists are going wide and breaking down outside edge. May need rubble walls here fight against further damage.
- Removed upper portion of log impaled into the trail. Did not have time or materials to remove entire log so left a short portion to keep stock from stepping into the hole.

Task(s) remaining:

- Return to upper portion with focus on removing trail berms
- Mike Bonomo to schedule work crew for lower portion of LBQ trail.



Fallen rotten trunk cleared and dug away



Entrance path to Camp Jolly cleared.



Impaled log reduced in height