

TRAIL CREW NOTES

5/13/23

Location: Duckabush, ONF

Crew members:

Rebecca Wanagel
Martin Knowles
Paul Kamps
Eric Nagle
Bernt Ericson
Miguel Reabold
Brian Berg
Ginsy Stone
Hal Beattie
Rebekah Ross

Packers:

Harold Wiese (Magic, Archie, Katy, Sugar)
Mario Porras (Lucas and Reggie)
Tawyna Caldwell (Copper)

Hours: 150

This was the final day for the Duckabush project. As luck would have it, we had zoomed through the 4 hours of spring and gone right to summer. It was hot. Very hot. And as luck would have it, our job site wasn't in the shade.

But we persevered. We had brought rigging in case the rootball did move (we didn't think it would, but planned for in case it did). We got the job done. The next step is for WTA to do some restoration tread work in there. I have been coordinating with the WTA volunteer crew lead on this.

This is teamwork at its best. The skill of the packers astounds me and this project would have been nearly impossible without them. The animals (listed below next to their humans' names) were extremely strong, well-behaved, willing, capable and patient ... and highly bribed by me with a Costco-size bag of carrots. 😊

Work accomplished:

1. Packed in all supplies and hiked to job site (5 miles).
2. Cut out a 32" tree on the way.
3. Fell a snag that was a safety hazard at the jobsite.
4. Rigged and pulled out a rootmass that had gotten impaled when we cut it off the rootball from above.
5. Cut both trees and got their rounds to go downhill.
6. Cut another tree that was nearby the job site.
7. Scouted to the ONP boundary to collect information for the WTA crew that will be going in next.
8. Repacked the animals and hiked out.



TAWNYA CALDWELL AND COPPER.



THIS WAS A TREE THAT CAME DOWN BETWEEN THE HUMPS AFTER OUR LAST PREP DAY. 32" WITH SOME SIDE AND BOTTOM BIND. WE HAD TO CLEAR THIS TO GET THE STOCK THROUGH.



ONCE WE RELEASED IT, WE HAD TWO SAWS GOING ON THIS TREE TO MAKE SHORT WORK OF IT. WE NEEDED TO GET GOING TO THE JOBSITE.



HAROLD ON MAGIC. KATY SHOWING HER BEST CAMERA SIDE. TAWNYA AND MARIO COMING UP BEHIND.



FIRST JOB WAS TO FELL THIS SNAG THAT WAS A SAFETY HAZARD AT THE JOB SITE. MARTIN DID THIS. SPECIAL THANKS TO DAN DOSEY WHO SPENT A COUPLE OF HOURS WITH US LAST WEEKEND TO GIVE US SOME REFRESHER FELLING TIPS AND PRACTICE. THANKS TO TOM MIX FOR SUGGESTING IT. DUE TO THAT AND MARTIN'S GOOD WORK, THE SNAG CAME DOWN PERFECTLY. IT EXPLODED ON IMPACT WITH OTHER TREES. IT DID MAKE A MESS IN THE EAST END OF FIVE MILE CAMP (OF COURSE WE ENSURED NOBODY WAS DOWN THERE AND GUARDED THE ENTRANCE). BUT THE UPCOMING WTA CREW WILL CLEAR THAT BACK UP. THIS IS A SCREEN SHOT CAPTURE FROM THE VIDEO SO YOU'RE SEEING THE SNAG START TO EXPLODE APART.



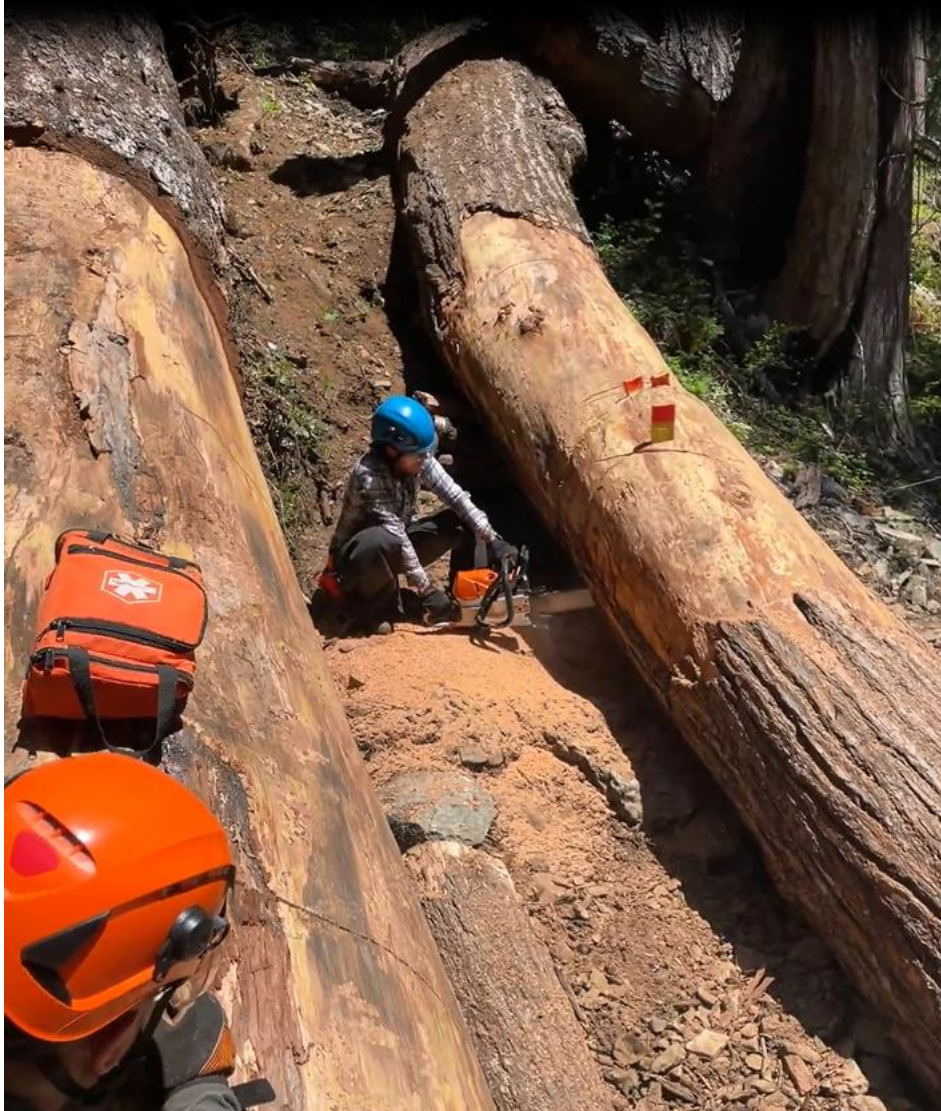
PAUL KAMPS RAN THE RIGGING CREW TO MOVE THE ROOTMASS THAT WE HAD DROPPED AND IMPALED, RIGHT IN THE WAY OF COURSE. PAUL TAUGHT GINSY HOW TO RUN THE GRIP HOIST BUT, UNFORTUNATELY, I DON'T HAVE A PICTURE OF THAT. SPECIAL THANKS TO TOM MIX FOR GUIDING US TO THE CORRECT GEAR TO TAKE, AND FOR HIS EXTRA EFFORT TO SEND US SOME TIPS AND ADVICE. WE NEVER DID NEED THIS FOR THE ROOTBALL, BUT WE WERE PREPPED AND PRACTICED JUST IN CASE.



THE TREES WERE LARGER THAN THE BAR LENGTHS WE HAD, WHICH WE KNEW. WE DID OUR FIRST CUTS FROM THE OFFSIDE AND THEN MOVED TO THE SAFER SIDE FOR THE FINISH CUTS.



KATY, ARCHIE AND MAGIC WAITING PATIENTLY.



CUTTING THE "SMALL" (3-FOOT) TREE. NO THERE WEREN'T SEVERAL FAILED CUTS – THOSE ARE SCORES FROM CHANGING OUR MINDS ABOUT THE ANGLES. 😊 GOOD TO NOTE: YES, I HAVE THE LARGE TREE BEHIND ME. HOWEVER WE HAD ANALYZED THIS VERY CAREFULLY OVER SEVERAL TRIPS AND CONCLUDED THERE WAS ABSOLUTELY NO WAY MY TREE COULD MOVE DOWN OR BACK (FOR A VARIETY OF REASONS, NOT THE LEAST OF WHICH IS THAT WOULD HAVE BEEN AN UPHILL MOVE AND GRAVITY DOESN'T OPERATE THAT WAY). ALSO, THE TOP OF THE TREE WAS TRAPPED BY OTHER TREES AND A MOUND OF DIRT. IN FACT, WE WERE QUITE CERTAIN THE ONLY THING IT COULD POSSIBLY DO WAS TIP DOWN A BIT – SO WE JAMMED SOME LOGS UNDER IT AND THEREFORE, THERE WAS REALLY NO MOVEMENT AT ALL WHEN THIS RELEASED. IN ANY CASE, WE HAD AN EASY RAMP OVER THE LARGE TREE JUST FOR EXTRA INSURANCE. WE ALSO ANGLED THE CUT SO THAT THE LOG COULD NOT COME BACK ON THE SAWYER.



WE OPTED FOR PIE CUTS OUT OF THE SIDE OF THE LARGER (5 FOOT) TREE BECAUSE, THOUGH THE THREE SAWYERS THOUGHT THE ROOTBALL WOULD STAY PUT – WE WANTED TO ALLOW IT TO MOVE DOWNHILL IF THAT’S WHAT IT WERE TO DO.



WEDGES CAME IN HANDY MANY TIMES.



I KNOW BRIAN BERG WELL FROM MY WTA DAYS. I'M SUPER HAPPY TO BE WORKING WITH HIM AGAIN.



I GOT TO MEET HAL BEATTIE AND REBEKAH ROSS TODAY. THEY VOLUNTEERED FOR THE IMPORTANT JOB OF SCOUTING TO THE ONP BOUNDARY TO GAIN INTEL FOR THE UPCOMING WTA CREW. I HOPE THEY COME OUT ON FUTURE CREWS.



MEANWHILE BERNT ERICSEN WENT TO TAKE CARE OF ANOTHER NEARBY TROUBLESOME LOG. HAL AND REBEKAH STOPPED TO HELP ON THEIR WAY BACK FROM THE SCOUT. THIS LOG TURNED OUT TO BE WHAT I ALWAYS CALL A CONVEYOR-BELT LOG. ONE THAT JUST KEEPS ON SLIDING DOWN.



GINSY STONE WAS BERNT'S ASSISTANT. GINSY IS NEW TO OUR GROUP AND INTERESTED IN LEARNING PACKING AS WELL AS TRAIL WORK. GINSY IS GOING TO BE A FANTASTIC CREW MEMBER AND I LOOK FORWARD TO WORKING TOGETHER ON A COUPLE OF MY UPCOMING BACKCOUNTRY CREWS.



ERIC NAGLE AND MIGUEL REABOLD COME ON MANY CREWS AND ARE INVALUABLE TO EVERY PROJECT. THEY ARE REALLY FUN TO WORK WITH! WE FIRST MET THROUGH WTA SO I'M THRILLED WE ARE STILL WORKING TOGETHER UNDER DIFFERENT HATS. MIGUEL AND I HAVE ONE CONSTANT DISAGREEMENT THOUGH: HE REALLY LOVES HEAT AND I REALLY DON'T. BUT EVEN HE SAID IT WAS A "BIT TOO HOT" YESTERDAY!



REMOVING ROUNDS FROM THE FIVE FOOT TREE.



MARIO LOADING UP. MARTIN ON HAND TO HELP LIFT THE LOAD.



IT'S ACTUALLY MUCH WIDER THAN IT LOOKS. THE PICTURE'S PERSPECTIVE SEEMS TO BE OFF SOMEHOW. I THINK BECAUSE I WAS TRYING TO GET THE ROOTBALL IN THE PICTURE TOO.



MOSTLY FINISHED AND YOU CAN CLEARLY SEE THE STUMP FROM THE FELLED SNAG – AND ITS PROXIMITY TO THE JOBSITE (IN FACT, A COUPLE OF MY ROUNDS DID ROLL OVER THAT). I SAY ‘MOSTLY’ BECAUSE THERE ARE TWO THINGS LEFT TO DO (WTA WILL DO BOTH):

- 1. TREAD RESTORATION. THAT IS NO SMALL JOB BUT I KNOW AL’S WTA CREW WILL DO A FANTASTIC JOB.**
- 2. CUT ONE MORE 2-FOOT ROUND OFF THAT SMALLER TREE. THE PIECE THAT NEEDS TO BE CUT OFF IS RAISED UP OUT OF THE DIRT AND SUSPENDED, SO WTA WILL BE ABLE TO EASILY REMOVE THAT WITH A CROSSCUT SAW.**

IT’S ACTUALLY PRETTY WIDE. WHEN I ASKED HAROLD IF IT WAS WIDE ENOUGH FOR STOCK, HE SAID HE COULD DRIVE A TRAIN THROUGH THERE. THE TRAIL DOES AN S-CURVE JOG THROUGH HERE, WHICH IS WHY THE CLEARANCE IS WIDER THAN IT LOOKS IN THE PICTURE. BUT RIGHT AT THE END WE REALIZED IT COULD USE A LITTLE MORE OFF THE SMALLER TREE TO MAKE THE JOG SMOOTHER. BY THE TIME WE REALIZED THAT, THE BARK REMOVAL TOOLS HAD GONE TO THE ANIMALS FOR PACKING. THE BARK WAS LOADED WITH GRAVELLY DIRT SO PUTTING A CHAINSAW ON THAT WOULD HAVE BEEN AN EFFORT IN FUTILITY. AND IT WAS HOT HOT HOT AND GETTING LATE.

WE WERE BEAT AND HEAT EXHAUSTION WAS SOMETHING WE WERE CAREFULLY AVOIDING ... AND WE STILL HAD A 5 MILE HIKE OUT BACK UP AND OVER BIG AND LITTLE HUMPS. PHEW! WE WERE DONE.